

**CBRE**

CORPORATIVO



**NEUCHÂTEL**

CUADRANTE POLANCO

July 2022

---

# A Dream Destination A World Class Building

## THE FACTS



**Low &  
High Rise**



**Height 4.25 m**  
Lease Span 12.8 m



**11 elevators +**  
1 freight elevator



**4 elevators**  
for parking basements



**Electrical Feeder**  
at floor



**Sprinklers** common  
areas + basements



**Touchless**  
systems



**ADA**  
compliance



**2 custom air handler**  
units per floor



2 pressurized  
**emergency stairs**



**+ 70 %**  
individual parking



**CCTV**  
24/7 365 days

Strategic Location

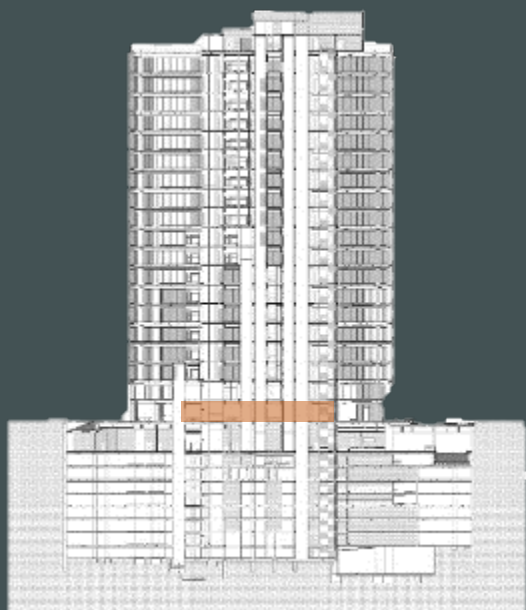
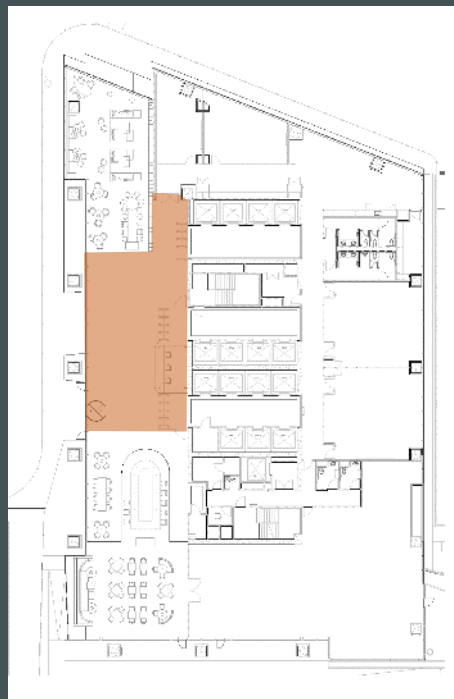
**Class A+ Office Building**

+31,000 Sqm Available

**Delivery above the market**

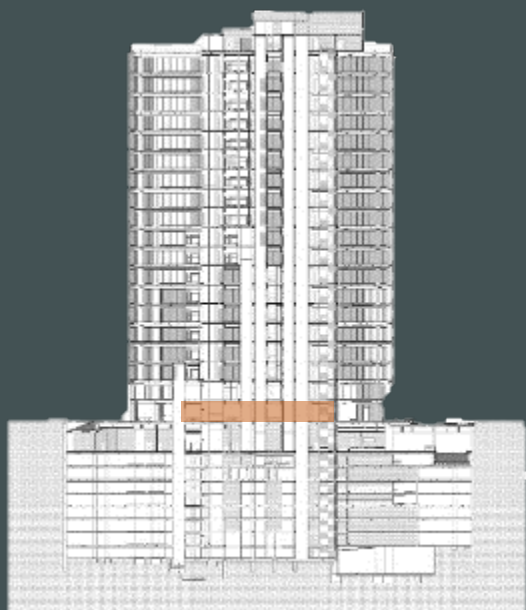
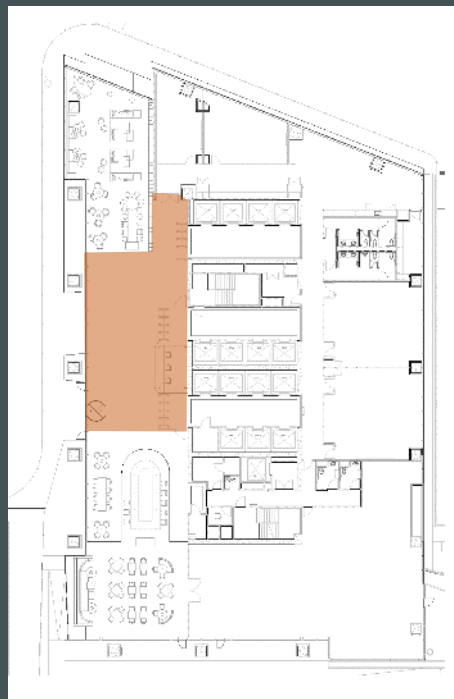


# MAIN LOBBY

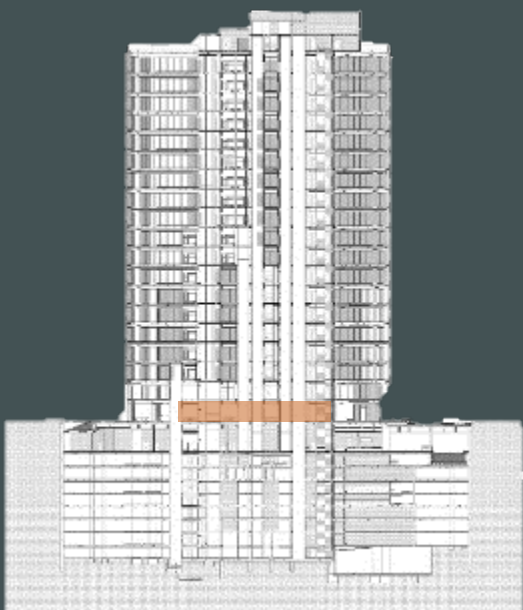
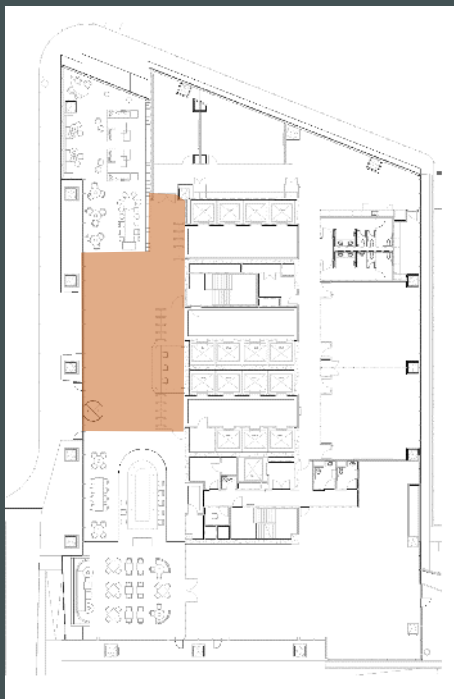




# MAIN LOBBY

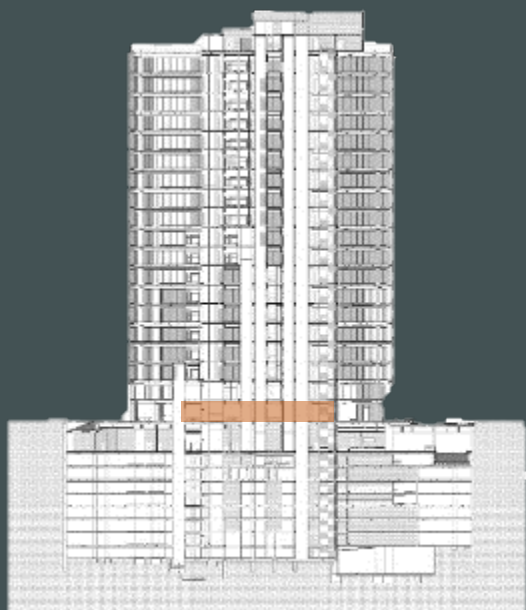
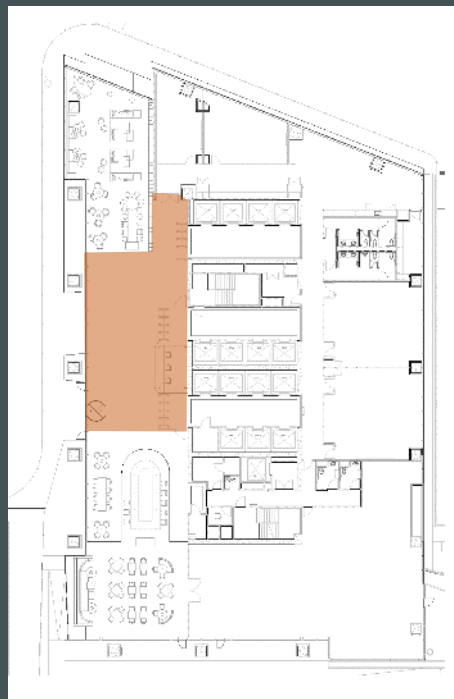


# MAIN LOBBY

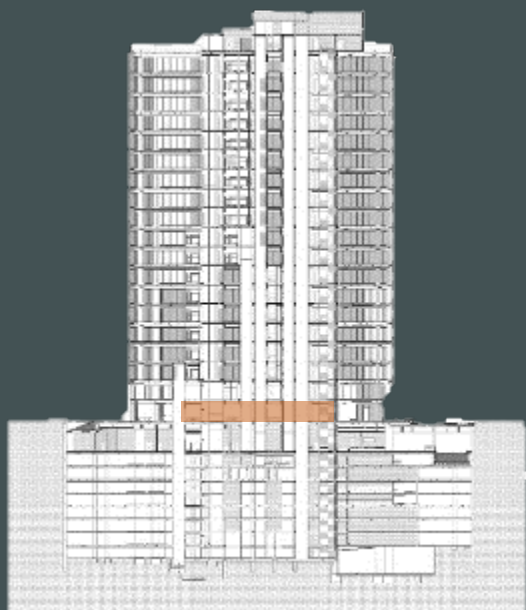
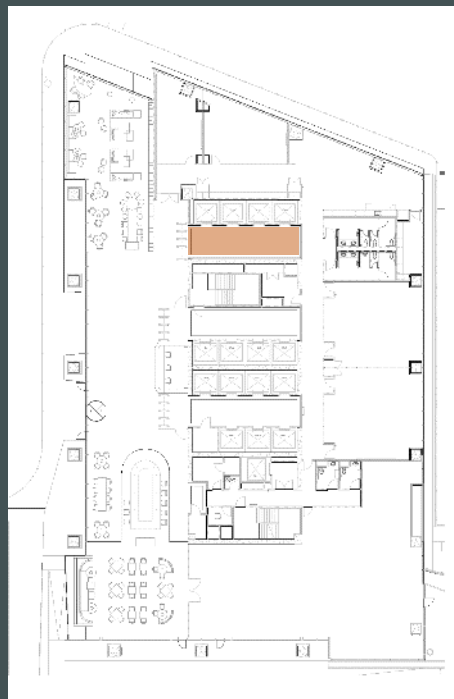




# MAIN LOBBY

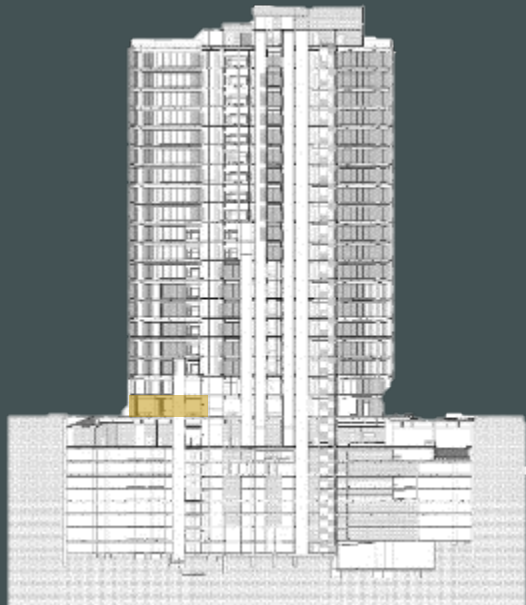
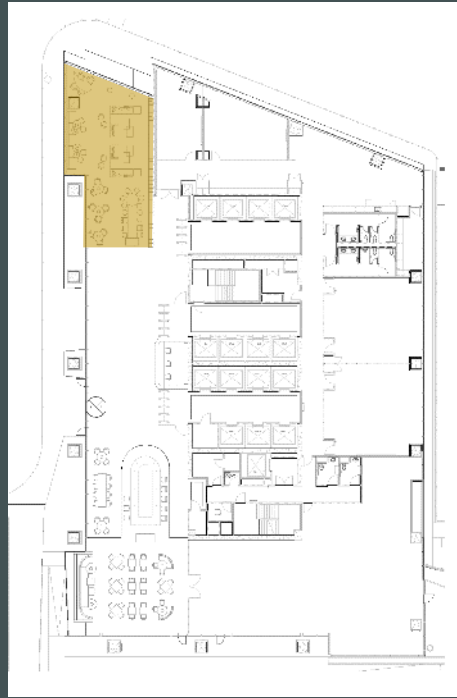


# MAIN LOBBY



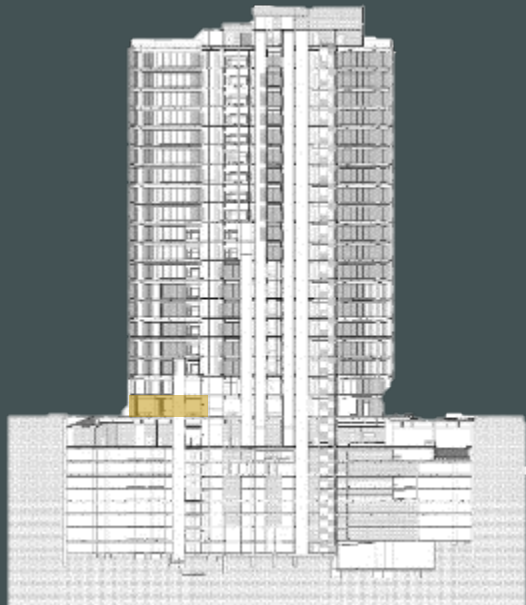
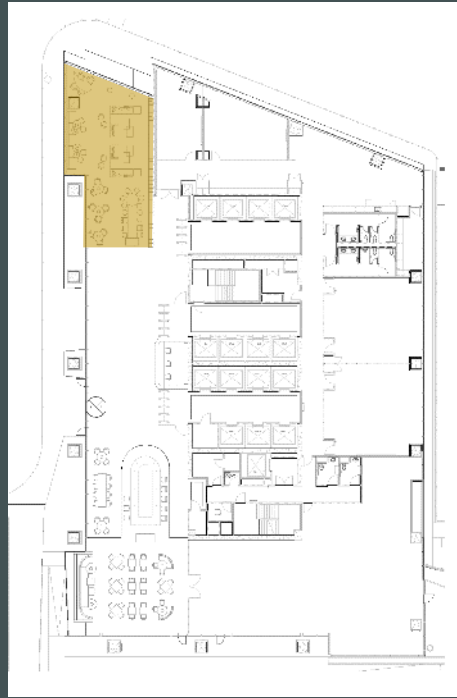


# LIBRARY LOUNGE



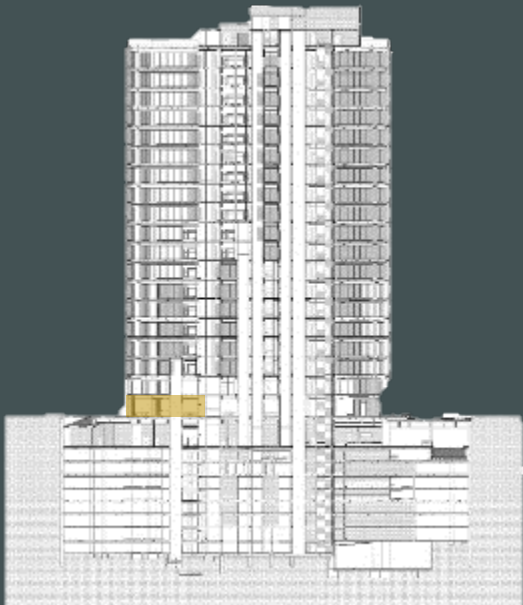
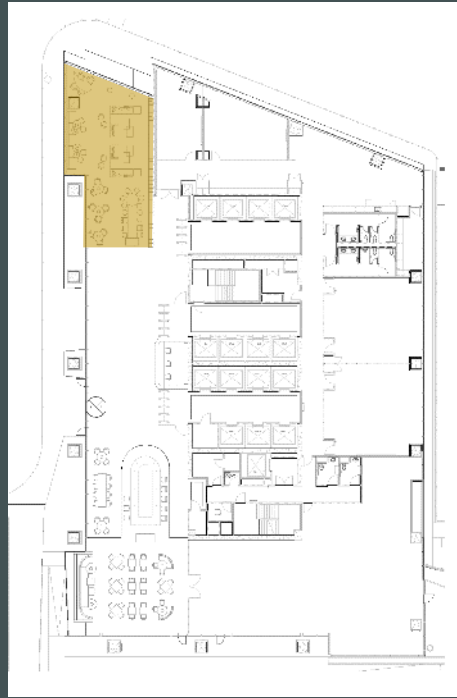


# LIBRARY LOUNGE



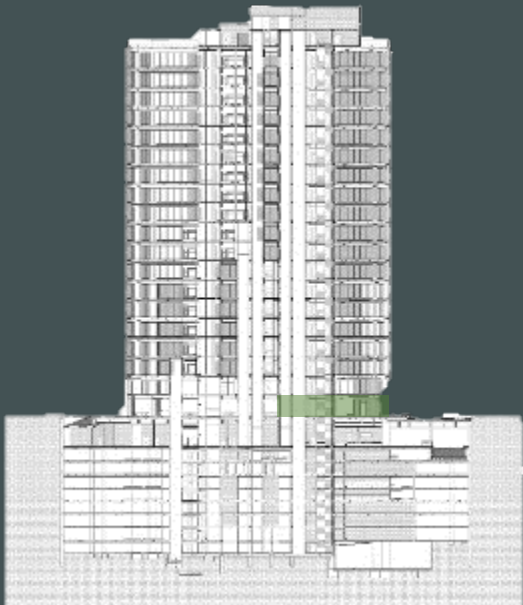
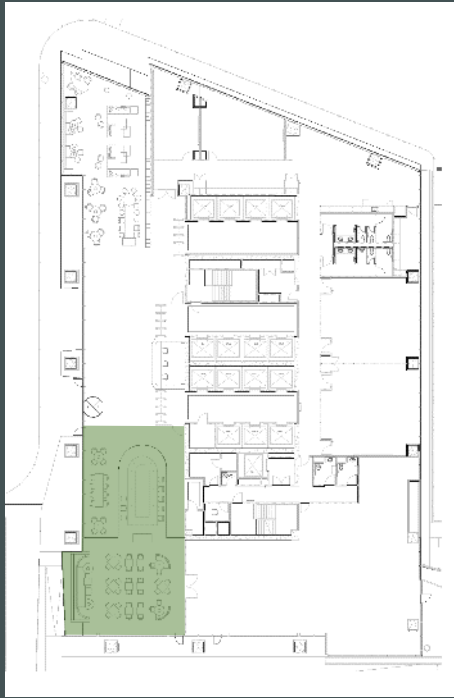


# LIBRARY LOUNGE



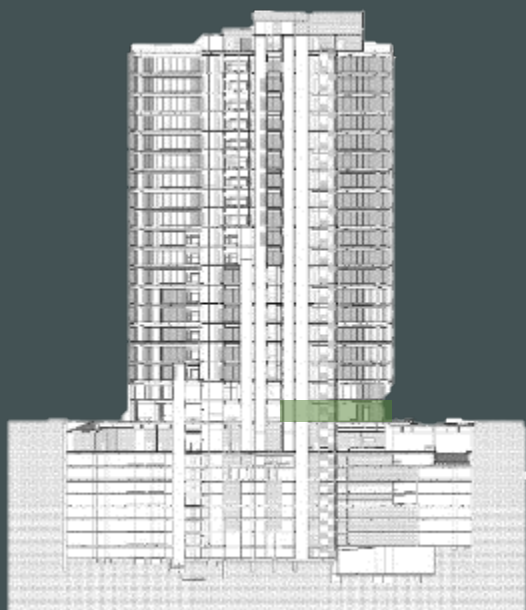
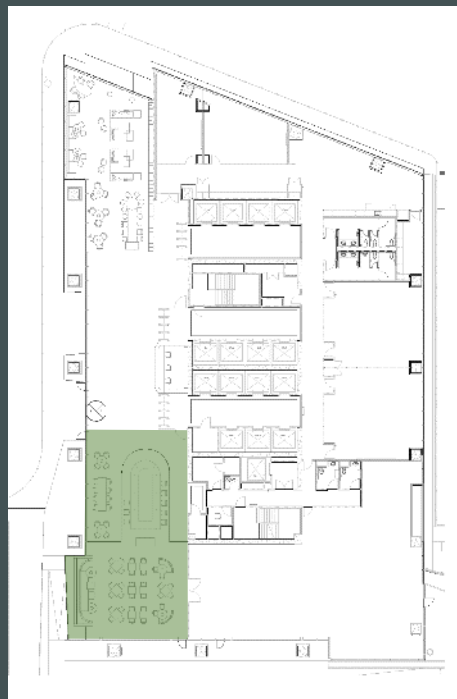


# COFFEE AND WINE BAR



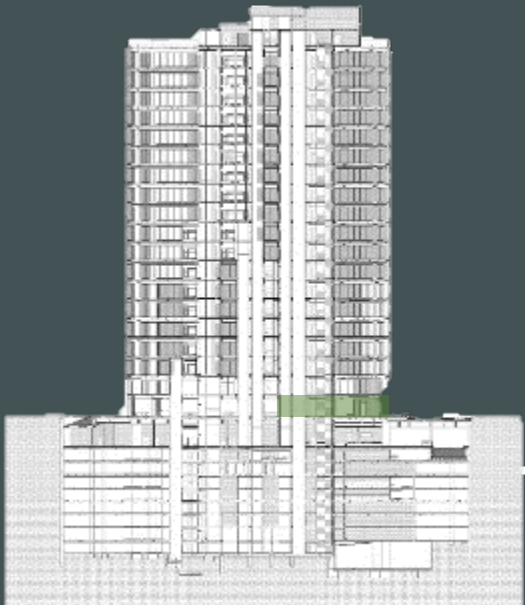
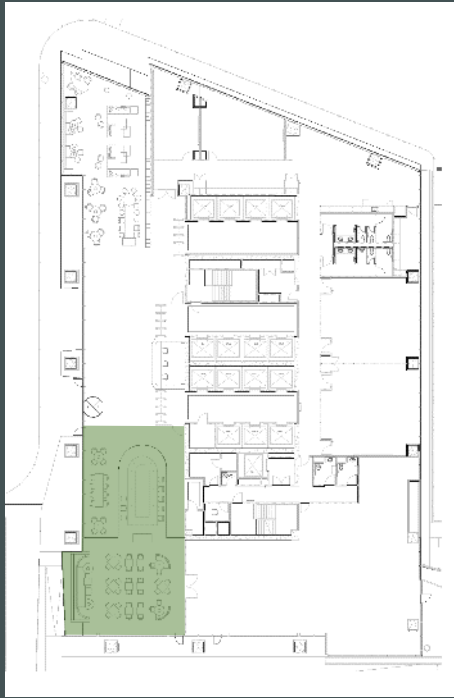


# COFFEE AND WINE BAR

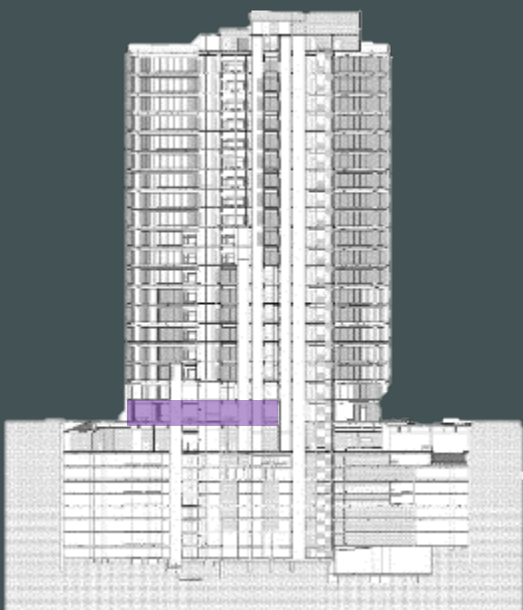
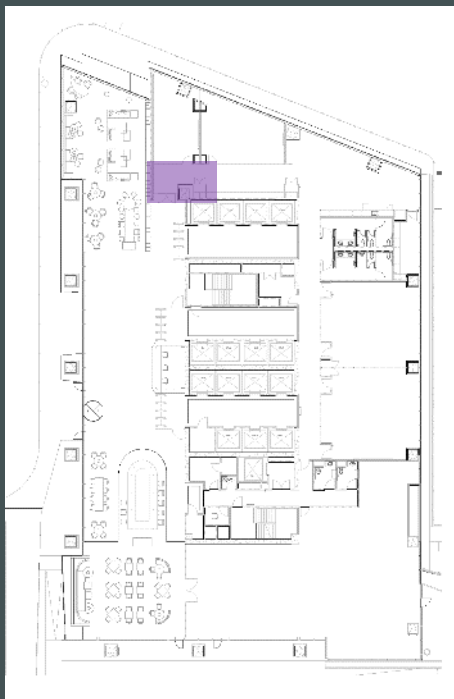




# COFFEE AND WINE BAR

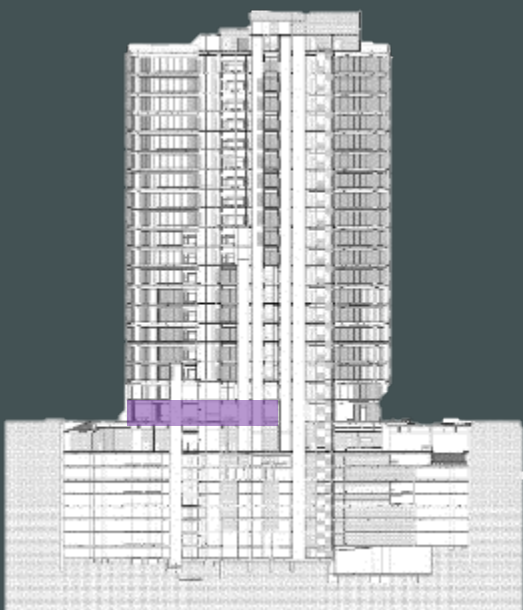
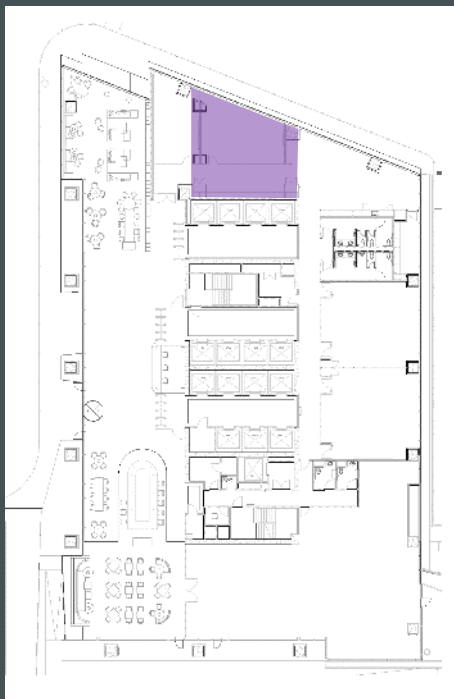


# CONFERENCE CENTER

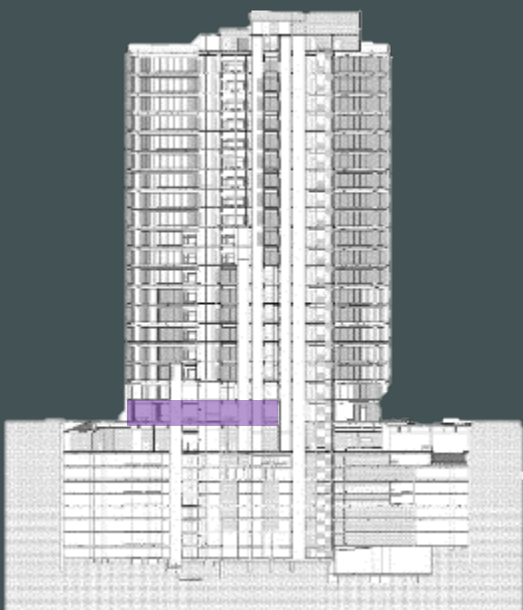
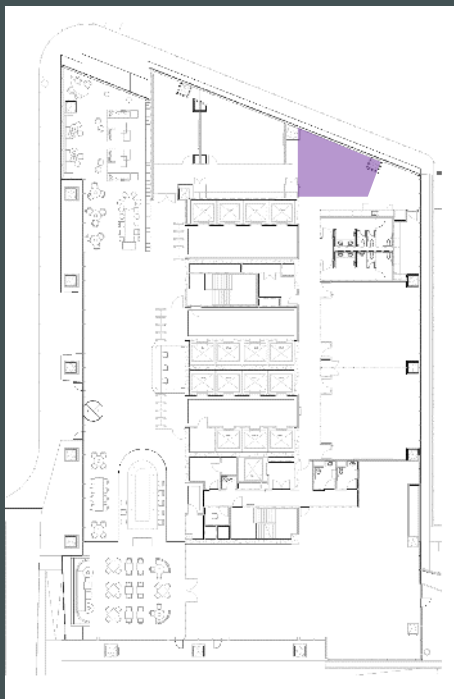




# CONFERENCE CENTER

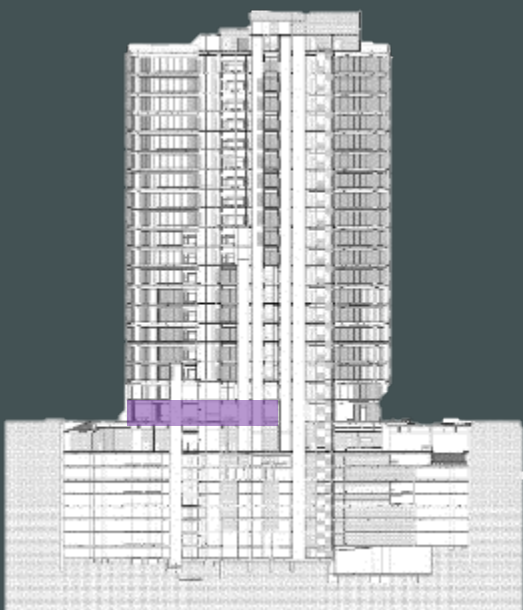
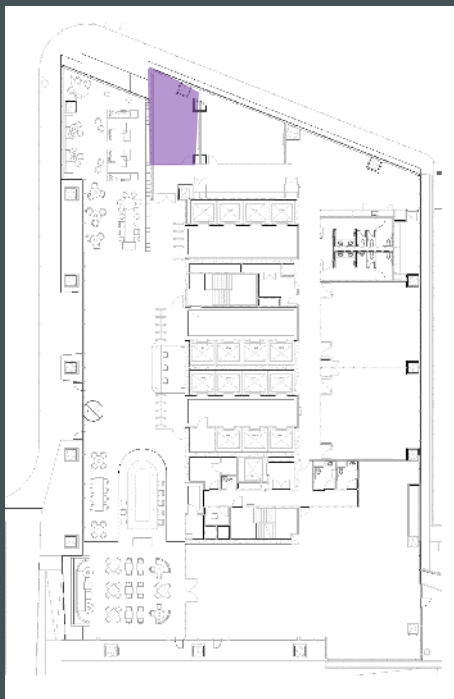


# CONFERENCE CENTER





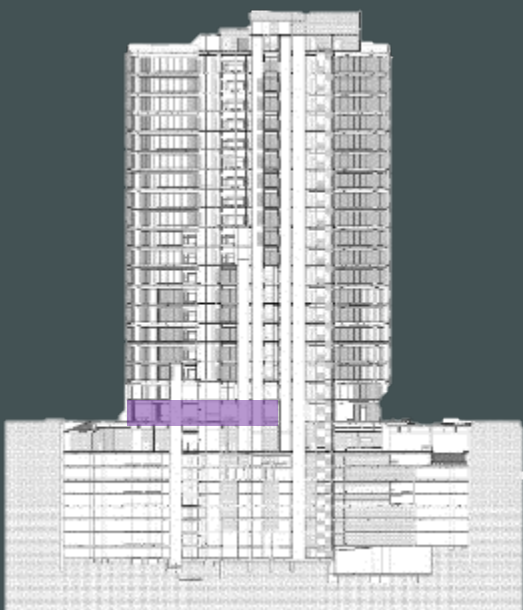
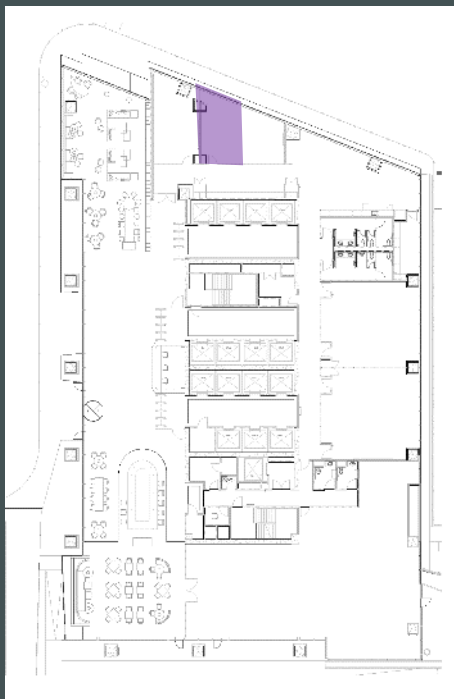
# CONFERENCE CENTER



+16 P CAPACITY



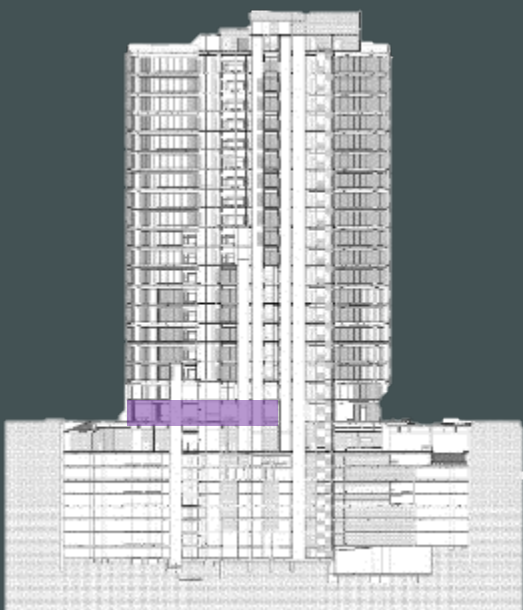
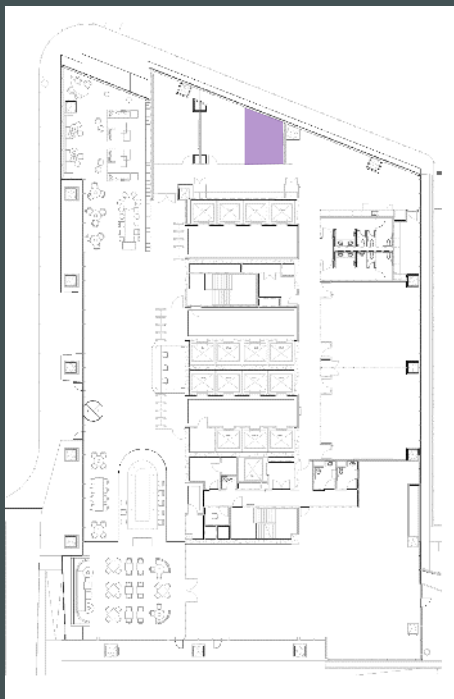
# CONFERENCE CENTER



6 P CAPACITY



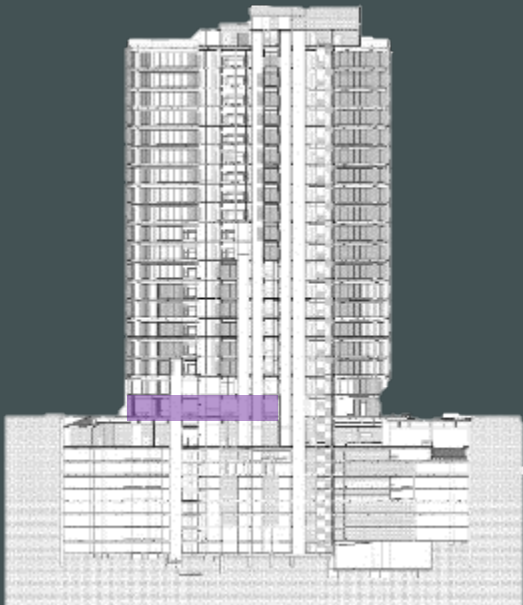
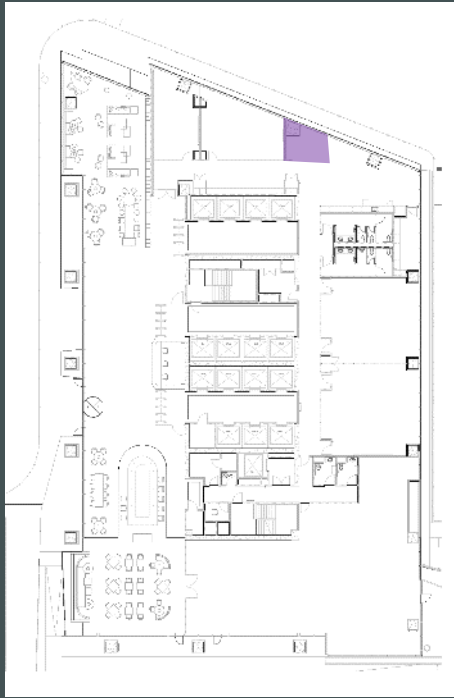
# CONFERENCE CENTER



8 P CAPACITY



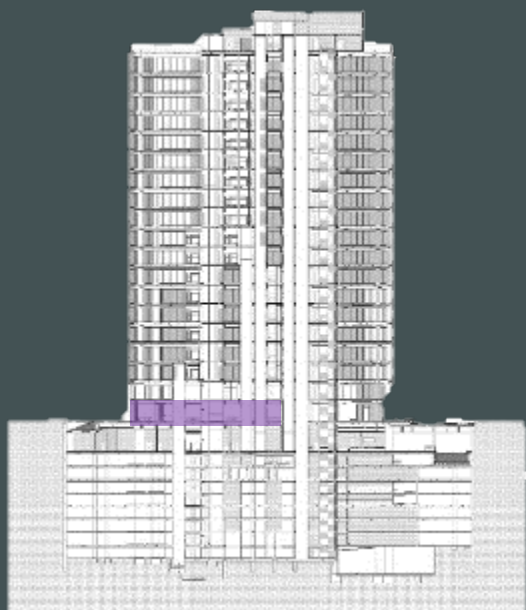
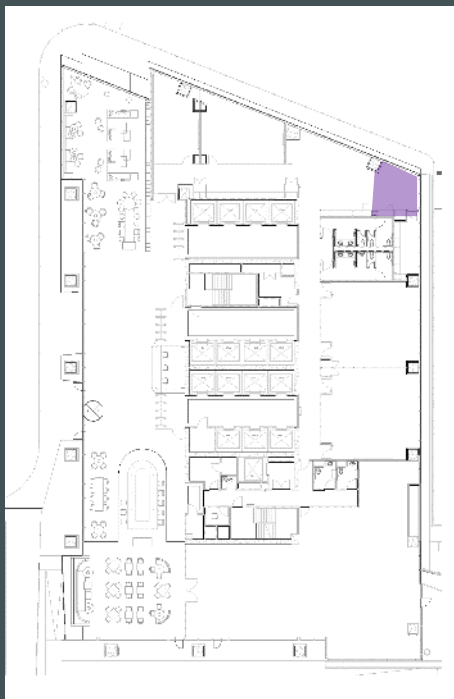
# CONFERENCE CENTER



10 P CAPACITY

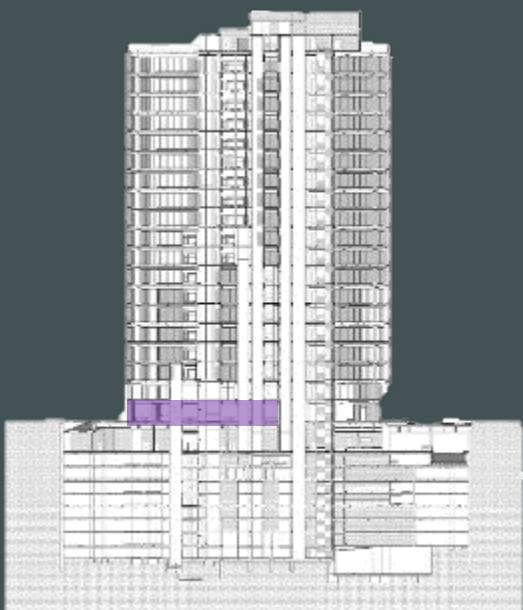
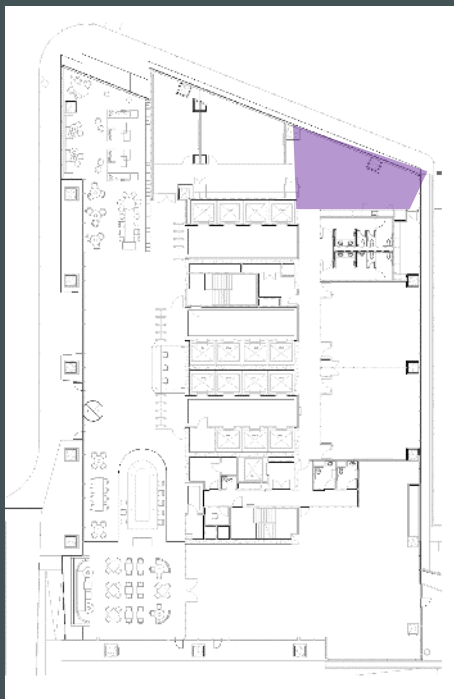


# CONFERENCE CENTER



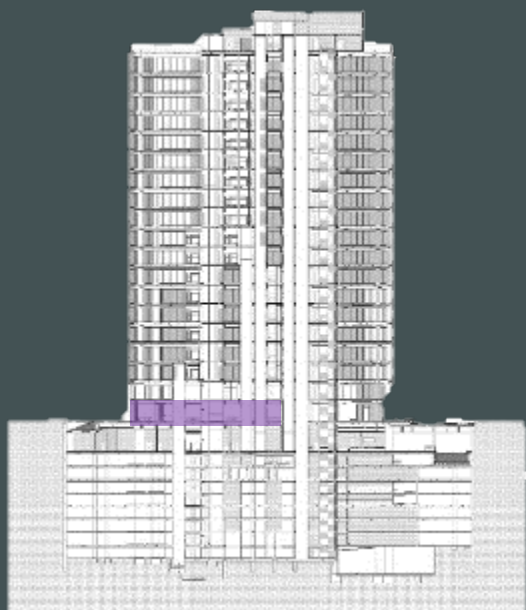
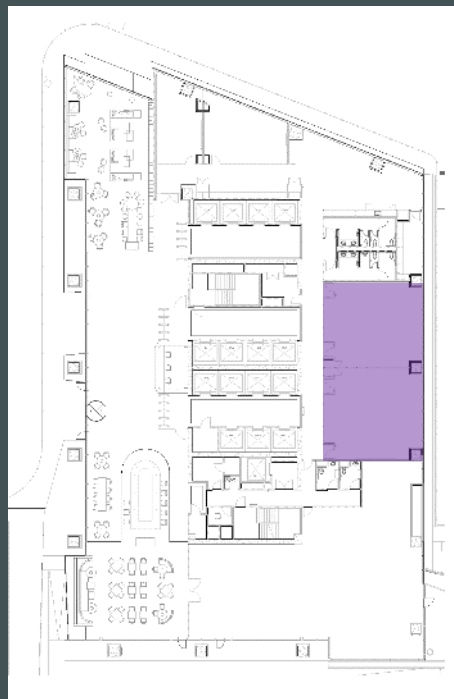


# CONFERENCE CENTER





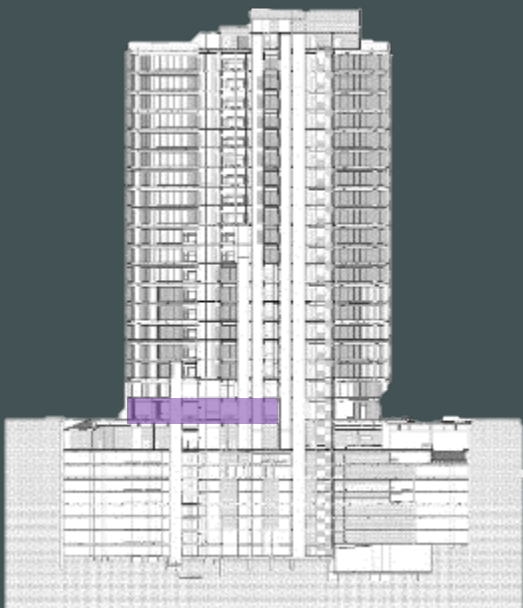
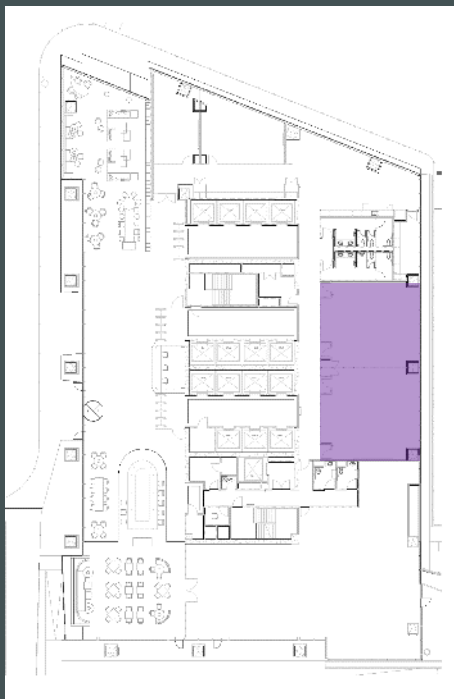
# CONFERENCE CENTER



BOARD ROOM / AUDITORIUM



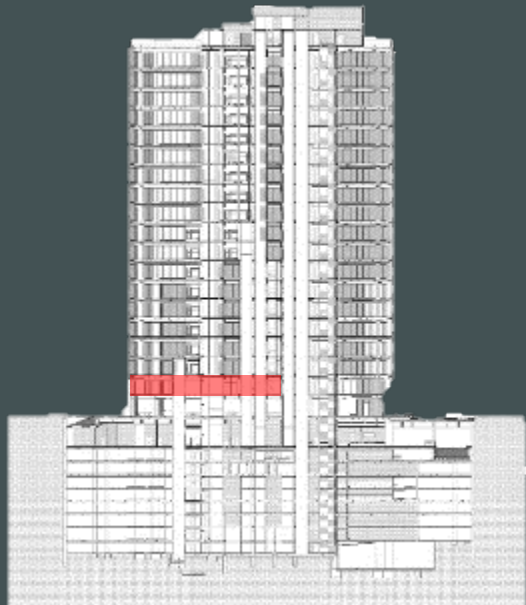
# CONFERENCE CENTER



BOARD ROOM / AUDITORIUM

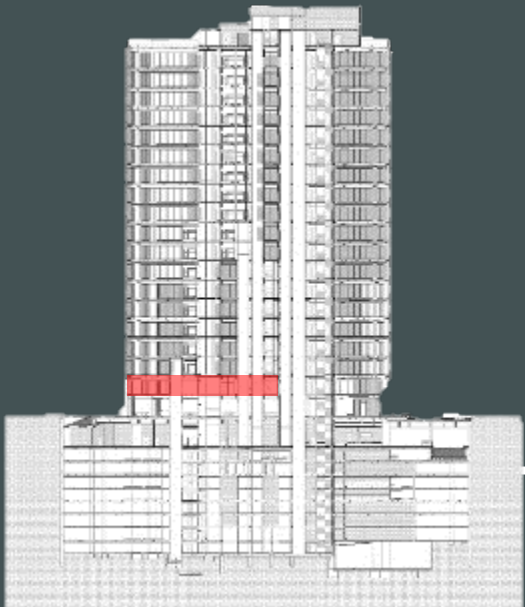


# FITNESS CENTER



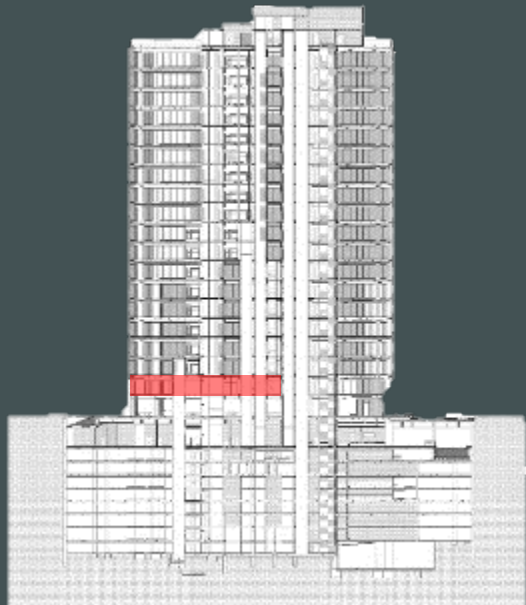


# FITNESS CENTER



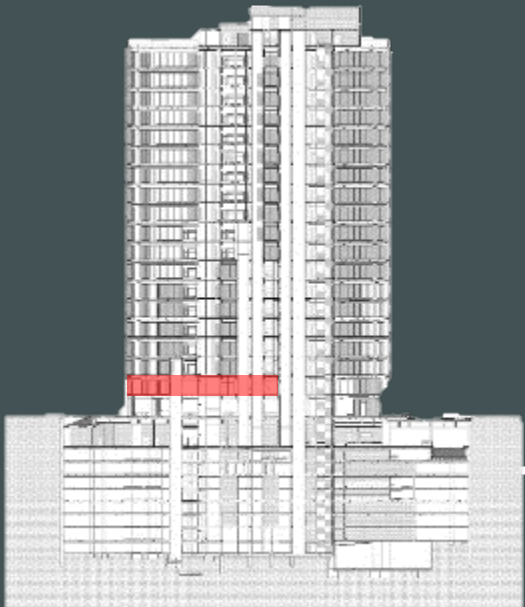


# FITNESS CENTER



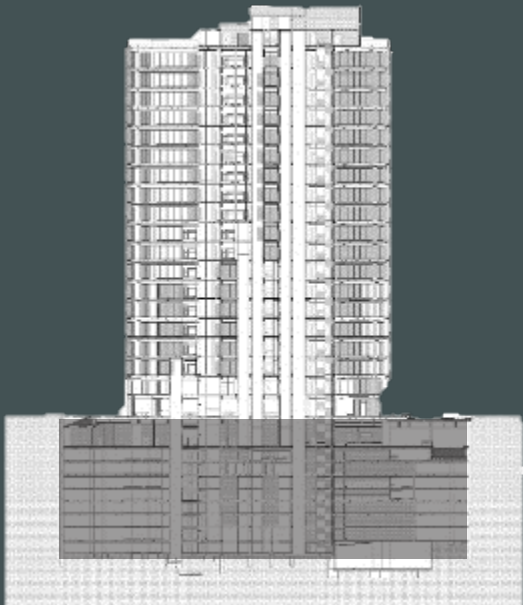
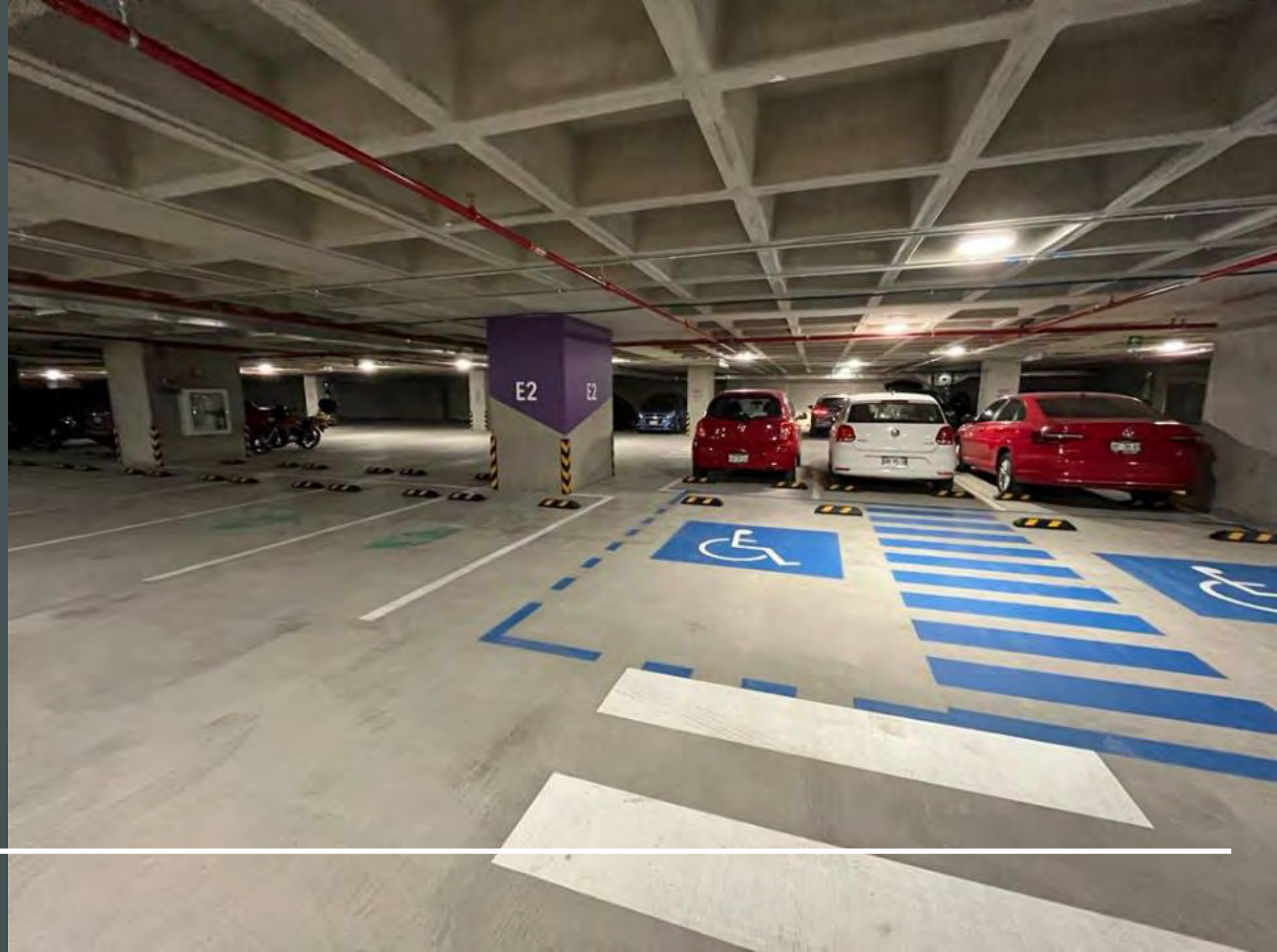


# FITNESS CENTER



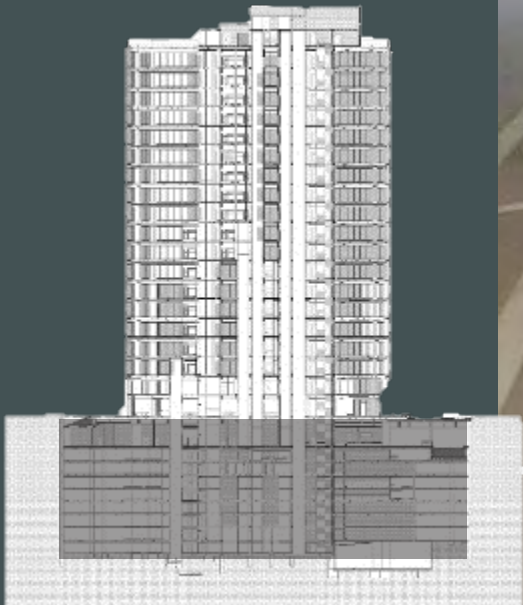
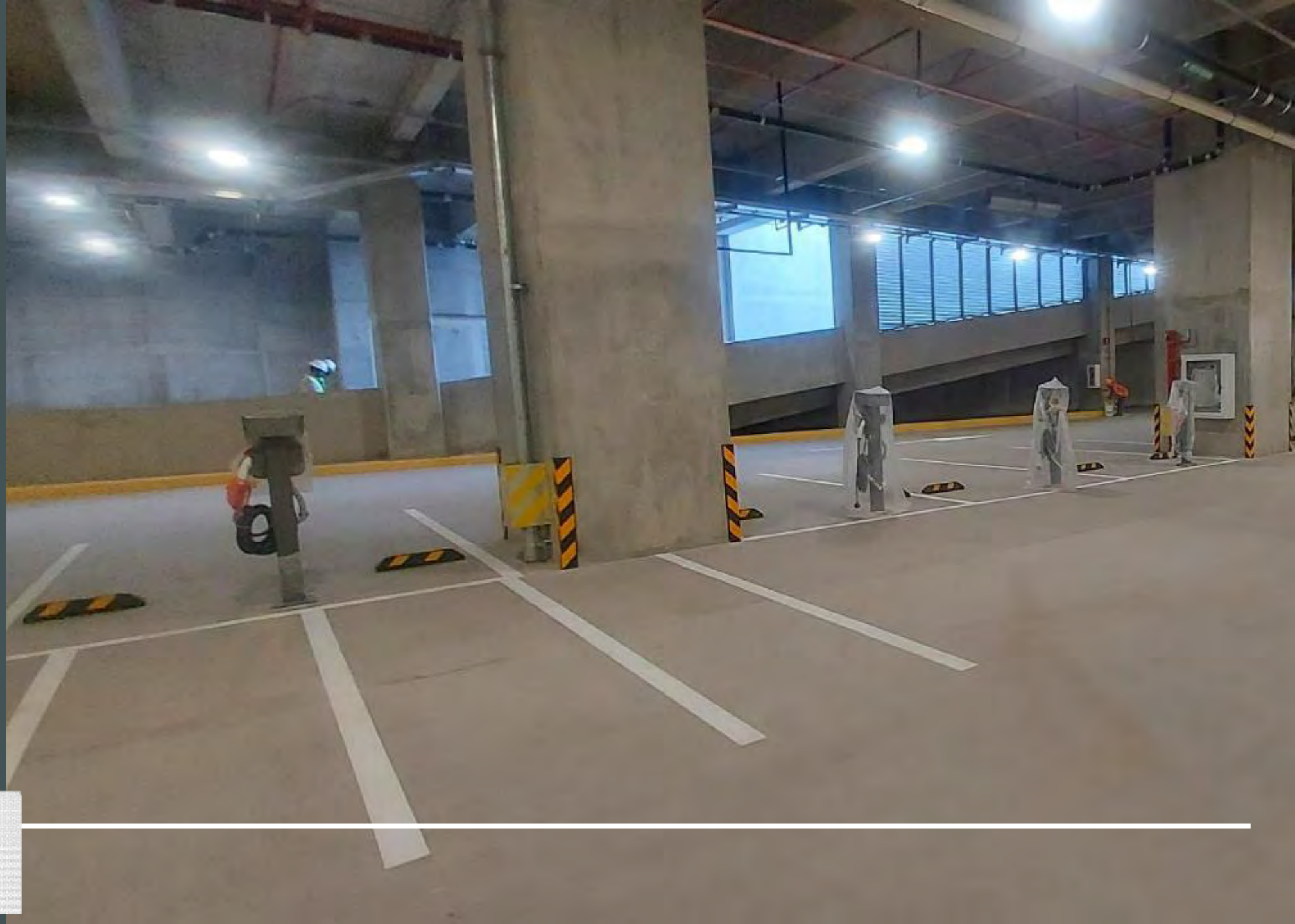


# PARKING



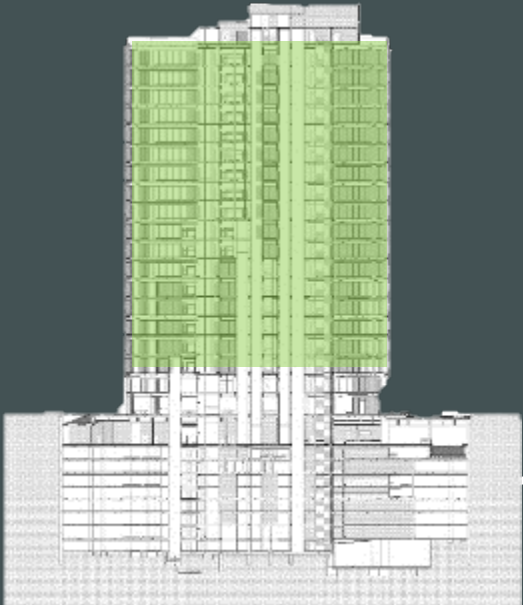


PARKING



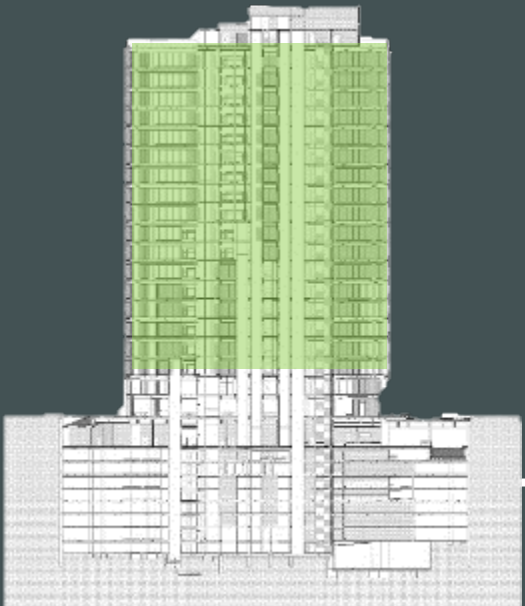
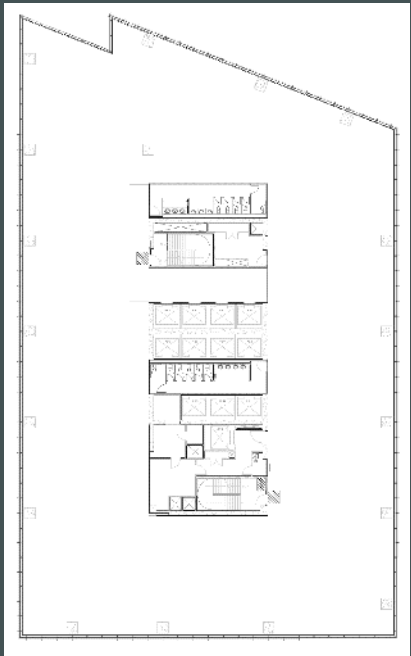


# FLOOR LOBBY



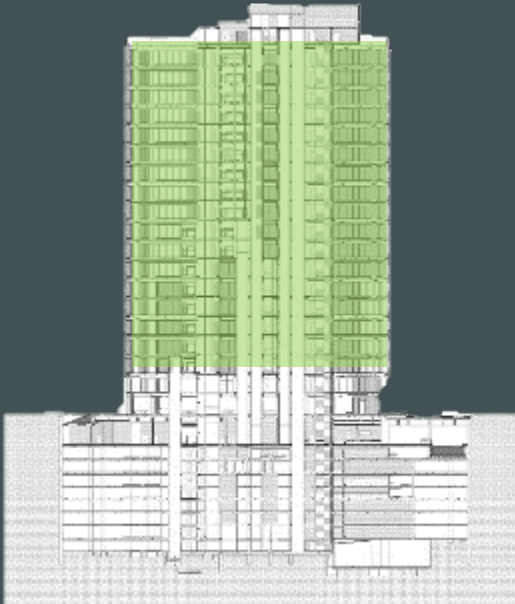
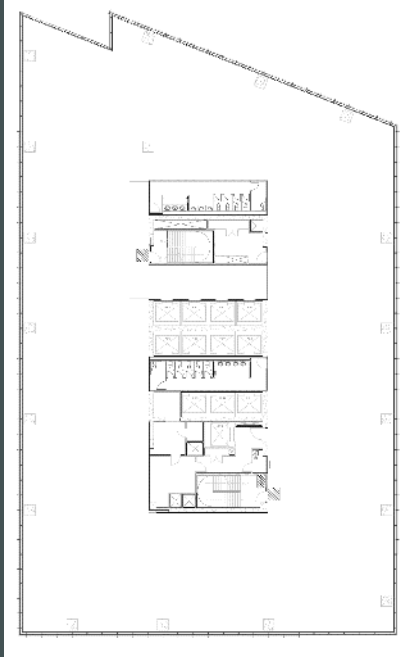


# FLOOR LOBBY



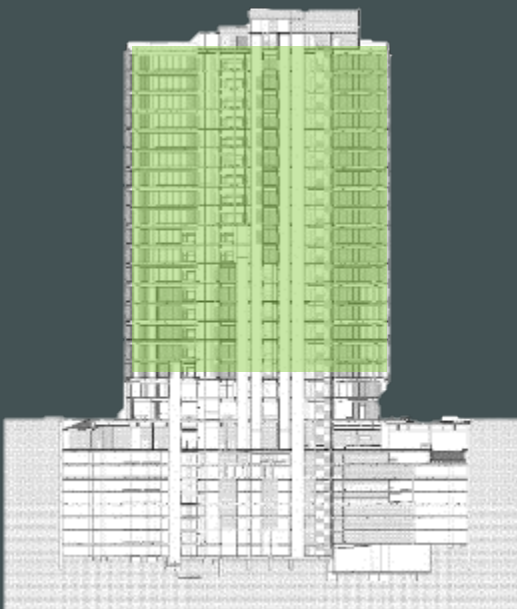


# FLOOR LOBBY





# FLOOR LOBBY







# 1 PHASE



**1 OFFICE BUILDING**  
38,588 SQM



**2 RESIDENTIAL BUILDINGS**  
+70 % SOLD



**RETAIL GROUND FLOOR**  
ENCOURAGING RECREATION

MAIN PLAZA PHASE 1 FLOOR PLAN





MAIN PLAZA





MAIN PLAZA





MAIN PLAZA





MAIN PLAZA





MAIN PLAZA

---





MAIN PLAZA

---





MAIN PLAZA





MAIN PLAZA





MAIN PLAZA

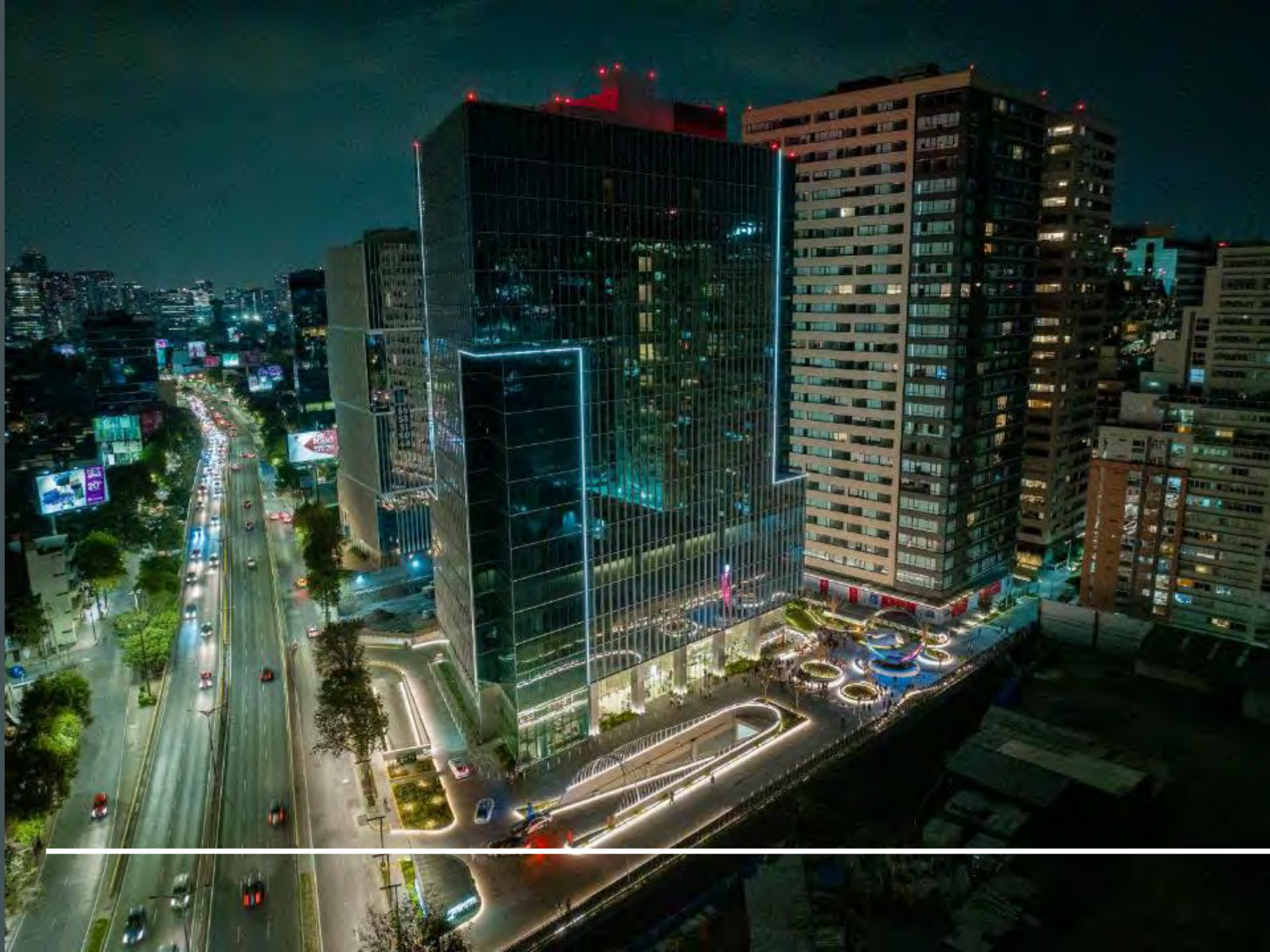




FACADES

---





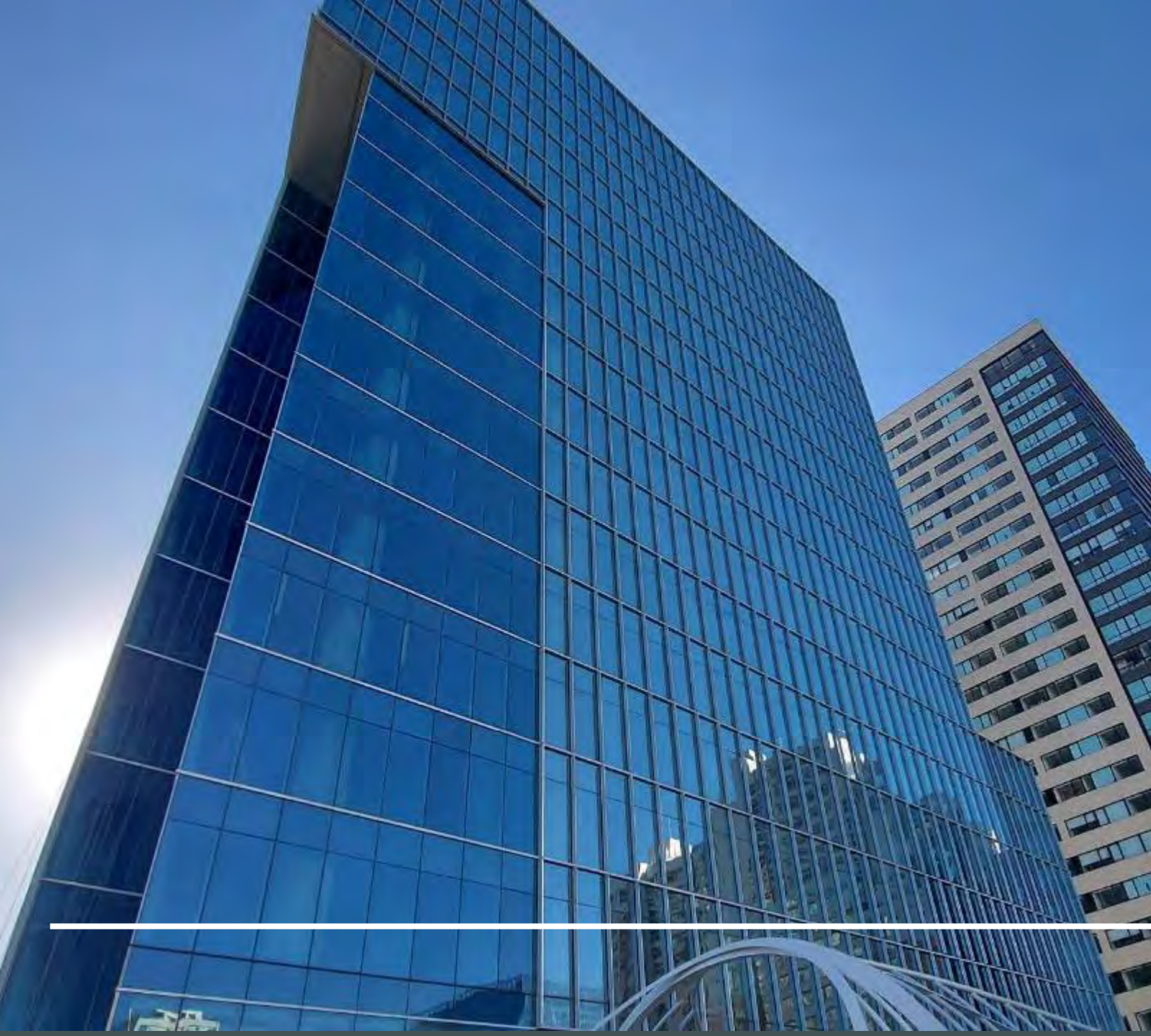
FACADES





FACADES





**CBRE**

Amy Henderson  
amy.henderson@cbre.com

<https://cgveron.com/Neuchatel/>

---